

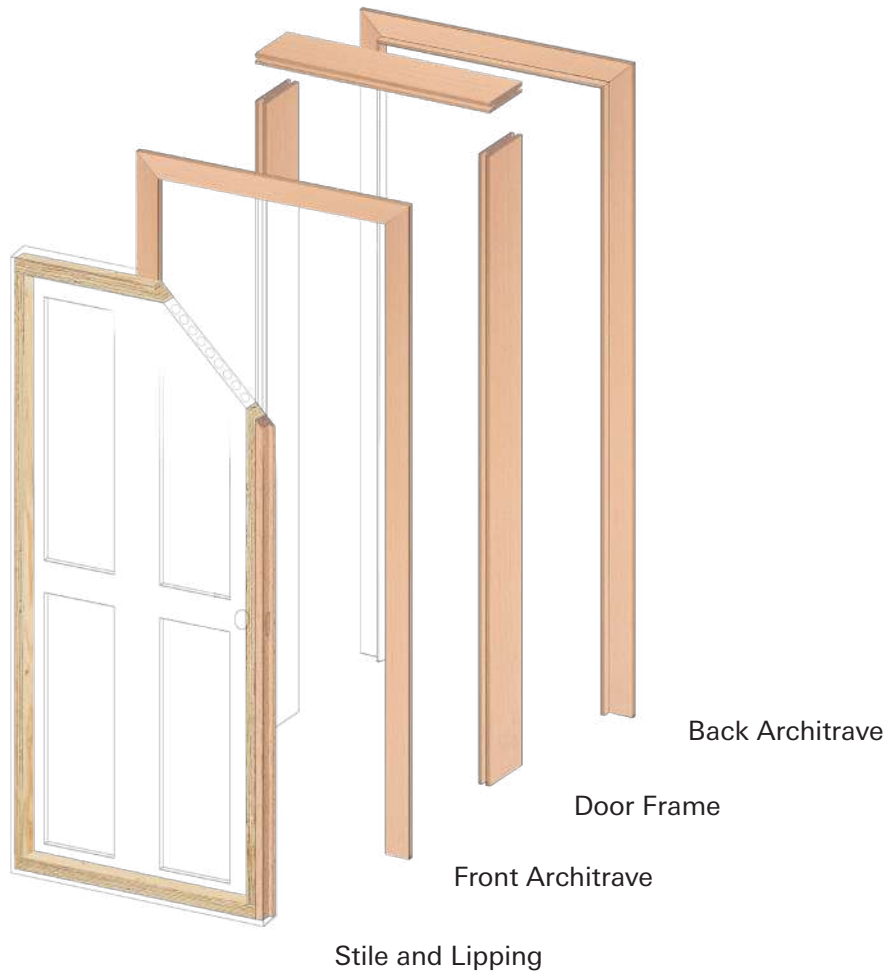
 **Pollmeier**

DOOR COMPONENTS



Save Costs and Improve Quality



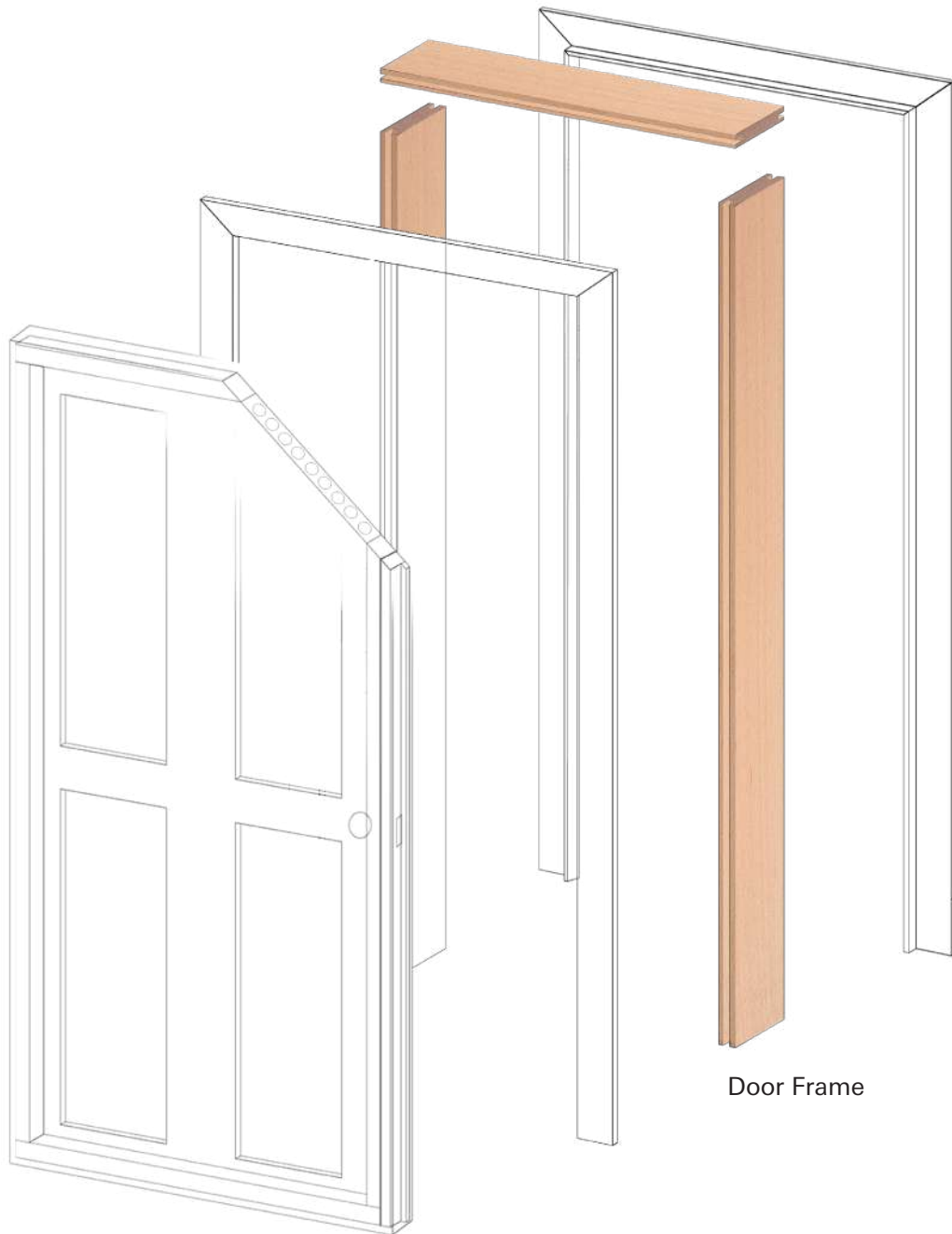


Door COMPONENTS from Pollmeier

Doors are more than just a functional element of our daily surroundings; they meet numerous complex requirements in terms of safety, stability, and aesthetics. Therefore, doors and corresponding components rely heavily on the highest material demands. This is where Pollmeier comes in: we offer a wide-ranging portfolio of products specifically tailored to the needs of the door industry. From fire ratings and dimensional stability to bending strength – our solutions meet the diverse and demanding requirements of this sector.

However, the added value of our products does not stop at quality and performance. Pollmeier understands that efficient cost control is crucial for the success of our customers. By using our high-quality wood products, door manufacturers can not only enhance the quality and functionality of their products but also save significantly on production and material procurement costs.

Discover in this brochure how you can raise the quality and performance of your door production to the next level with Pollmeier as your solution-oriented partner.



Door Frame

Door Frame

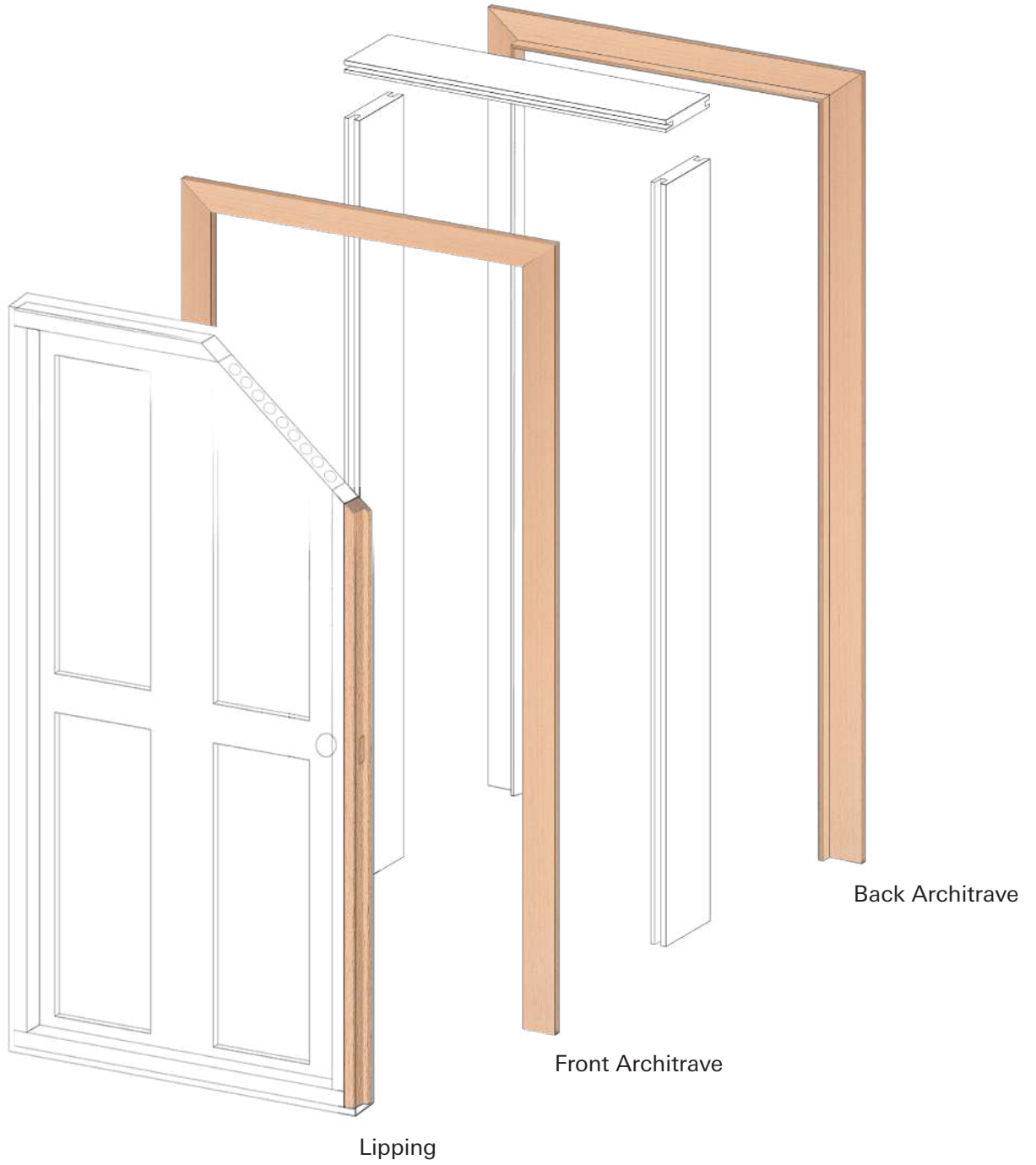


Property of the Final Product	C-Lam	E-Lam*	Edge Glued COMPONENTS
Material	solid beech wood 2-layer laminated	beech LVL	solid beech wood 2-pieces edge glued
Thickness [mm]	52 (planed to 44)	42 (sanded 40) 45 (sanded 44)	38 (sanded 36) 52 (sanded 48.5)
Widths [mm]	80, 100, 125, 150	100 - 300	136, 160, 180, 200, 225, 250
Lengths [mm]	900, 1000, 2200, 2300, 2400**	2000, 2200, 2300, 2400, 2500, 2700, 3000	1200, 2250, 2400**
Tolerances	Thickness: ± 0.5 mm Width: -0 / +1 mm Length: ± 2 mm per meter	Thickness: ± 1 mm (unsanded) ± 0.5 (sanded) Widths: ± 1 mm Length: ± 2 mm	Thickness: ± 0.3 mm Width: ±0.5 mm Length: ± 1 mm per meter
Quality Feature***	3-sided visible quality	non-visible quality	3-sided visible quality
Foiling / Wrapping	suitable	suitable	suitable
Painting / Staining	suitable	suitable small surface defects possible	suitable
Suitability for Fire Doors	suitable (approval may be required)	suitable tested for 60 minutes (approval may be required)	suitable (approval may be required)
Moisture Content	7-9%	6-8%	7-9%
Density	720 kg/m ³	820 kg/m ³	720 kg/m ³

* Other Thicknesses | Widths | Lengths on request

** Other Lengths available on request

*** Quality description: C-Lam page 14 | E-Lam page 18 | Edge Glued COMPONENTS page 10

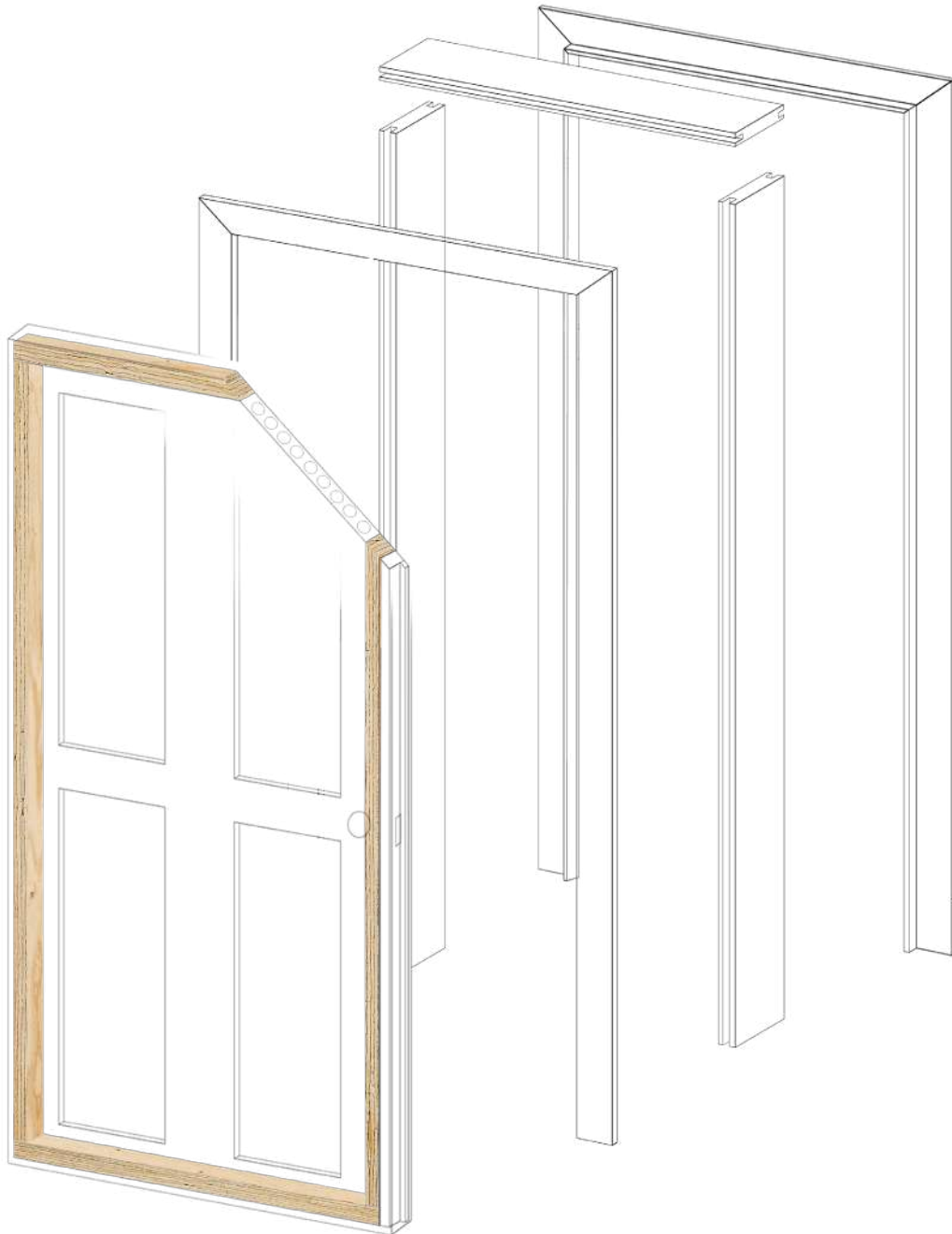




Property of the Final Product	COMPONENTS
Material	solid beech wood
Thickness [mm]	26 (23.8)
Widths [mm]	42, 45, 54, 68, 80, 100, 125
Lengths [mm]	800, 900, 1000, 1200, 2000, 2100, 2200, 2250, 2400, 2750, 3000 *
Tolerances	Thickness: ± 0.3 mm Width: ± 0.5 mm Length: ± 1 mm per meter
Quality Feature**	4-sided visible quality
Foiling	suitable
Painting	suitable
Moisture Content	7-9%
Density	720 kg/m ³

* COMPONENTS: further Lengths available

** Quality description: CTS page 20



Stile



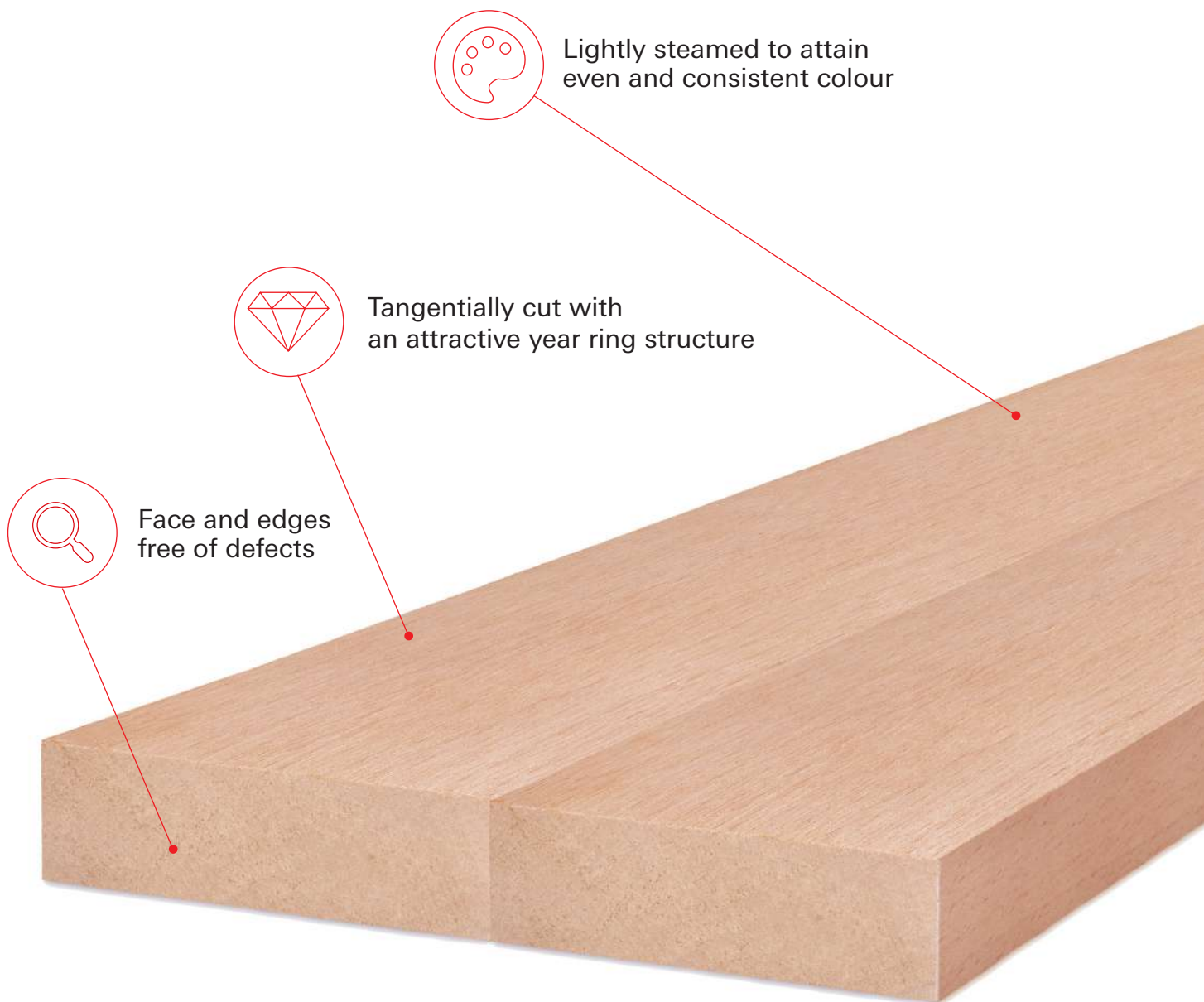
Property of the Final Product	CTS-LVL Spruce	CTS-LVL Beech	COMPONENTS
Material	spruce LVL	beech LVL	solid beech wood
Thickness [mm]	24, 27, 30, 36, 39, 42, 45, 51, 63, 75	33, 42, 51, 63 **	26 (23.8)
Widths [mm]	15 - 230	15 - 230	42, 45, 54, 68, 80, 100, 125
Lengths [mm]	700 - 6000	700 - 6000	1800, 1900, 2000, 2100, 2200, 2250, 2400, 2750, 3000 *
Tolerances	<p>Thickness:</p> <p><u>unsanded:</u> -2/ + 0.3 mm</p> <p><u>1 mm sanded:</u> -1/ +0.3 mm</p> <p><u>2 mm sanded:</u> ± 0.3 mm</p> <p>Width: ± 0.3 mm</p> <p>Length: ± 1 mm</p>	<p>Thickness:</p> <p><u>unsanded:</u> -2/ + 0.3 mm</p> <p><u>1 mm sanded:</u> -1/ +0.3 mm</p> <p><u>2 mm sanded:</u> ± 0.3 mm</p> <p>Width: ± 0.3 mm</p> <p>Length: ± 1 mm</p>	<p>Thickness:</p> <p>± 0.3 mm</p> <p>Width:</p> <p>± 0.5 mm</p> <p>Length:</p> <p>± 1 mm per meter</p>
Suitability for Fire Doors	suitable for 30 minutes	suitable tested for 60 minutes (approval may be required)	suitable for 30 minutes
Moisture Content	7-9%	6-8%	7-9%
Density	540 kg/m ³	820 kg/m ³	720 kg/m ³

* COMPONENTS: further Lengths available

** Other Thicknesses on request

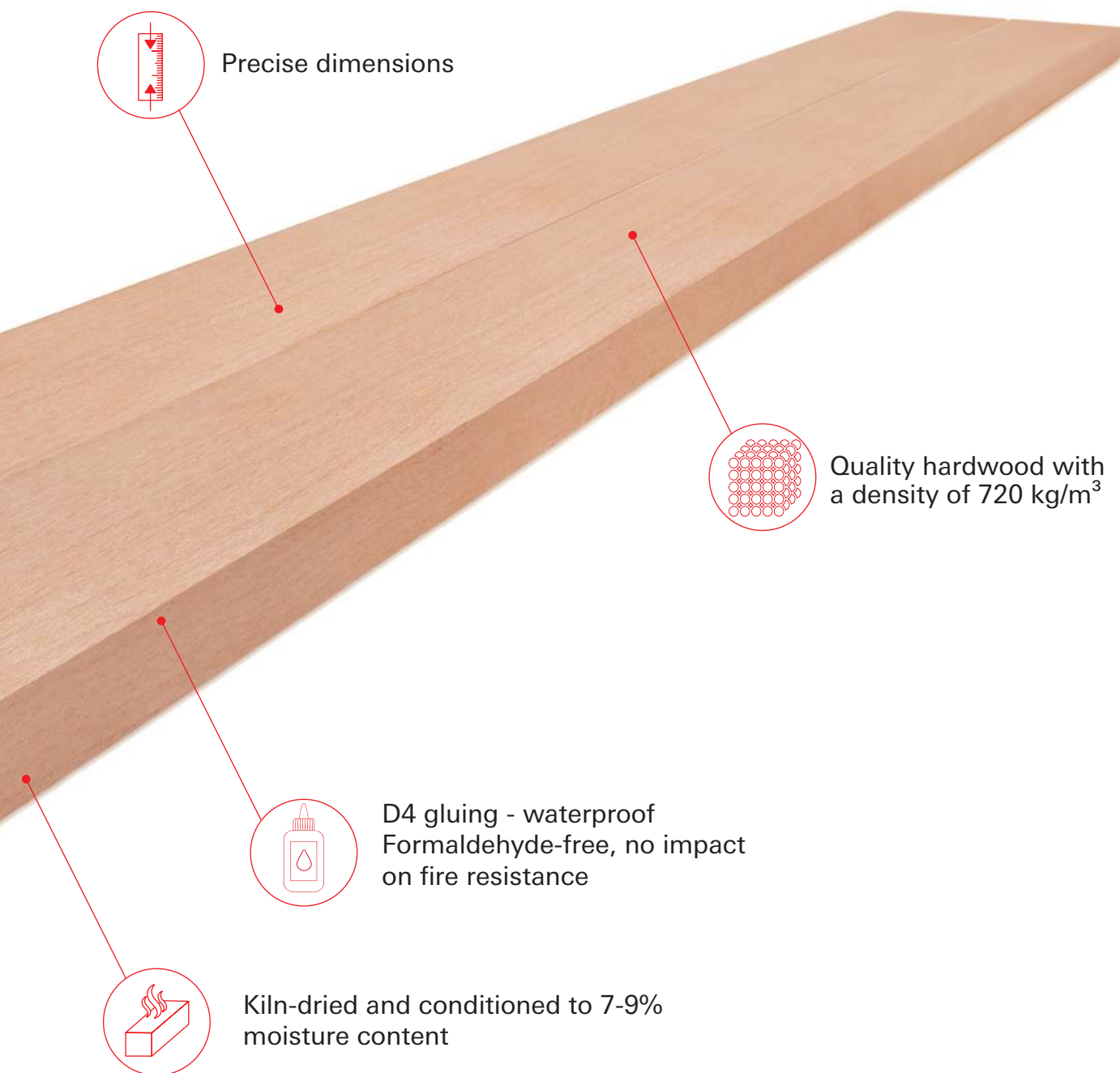
Edge Glued COMPONENTS **Door Frames** is a high quality, semi-finished door frame component, edge glued from two pieces of solid European Beech (*Fagus sylvatica*). It is ready to use, perfectly tailored to the production of interior door frames.

Our product is warp-resistant and free of defects in the visible areas (3 sides clear).



Overview - Dimensions

Sortings	Thickness [mm]	Widths [mm]	Lengths* [mm]
AAX*	38 (sanded 36)	136, 160, 180,	1200, 2200, 2250, 2400
CCX*	52 (sanded 48.5)	200, 225, 250	
Tolerances	± 0.3 mm	± 0.5 mm	± 1 mm per meter



* Other Lengths available on request

FRONT



BACK



FRONT

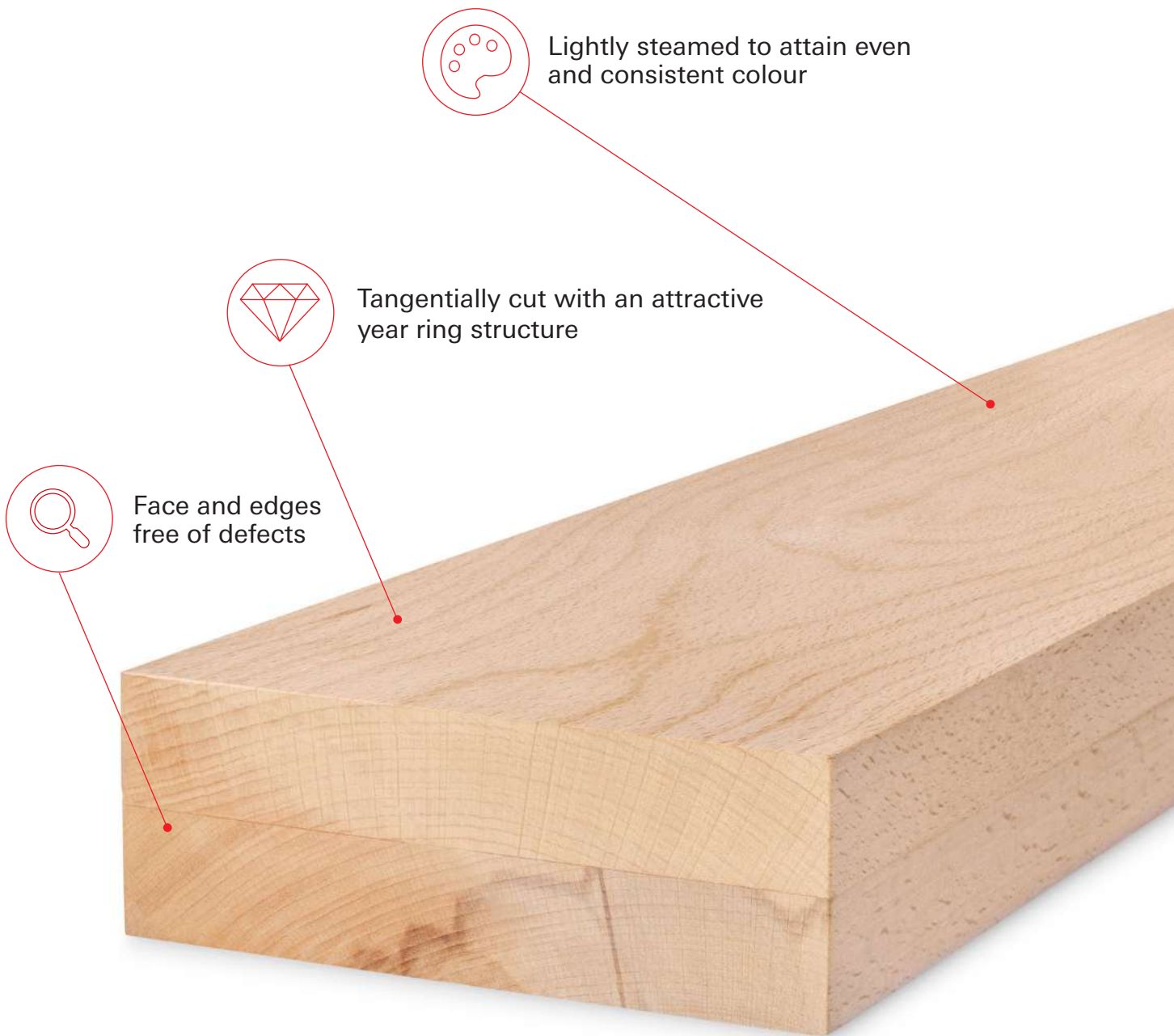


BACK



COMPONENTS Laminated (C-Lam) **Door Frames** is a high quality, semi-finished door frame component, glued from two pieces of solid European Beech (Fagus sylvatica). It is ready to use, perfectly tailored to the production of interior door frames.

Our product is warp-resistant and free of defects in the visible areas (3 sides clear).



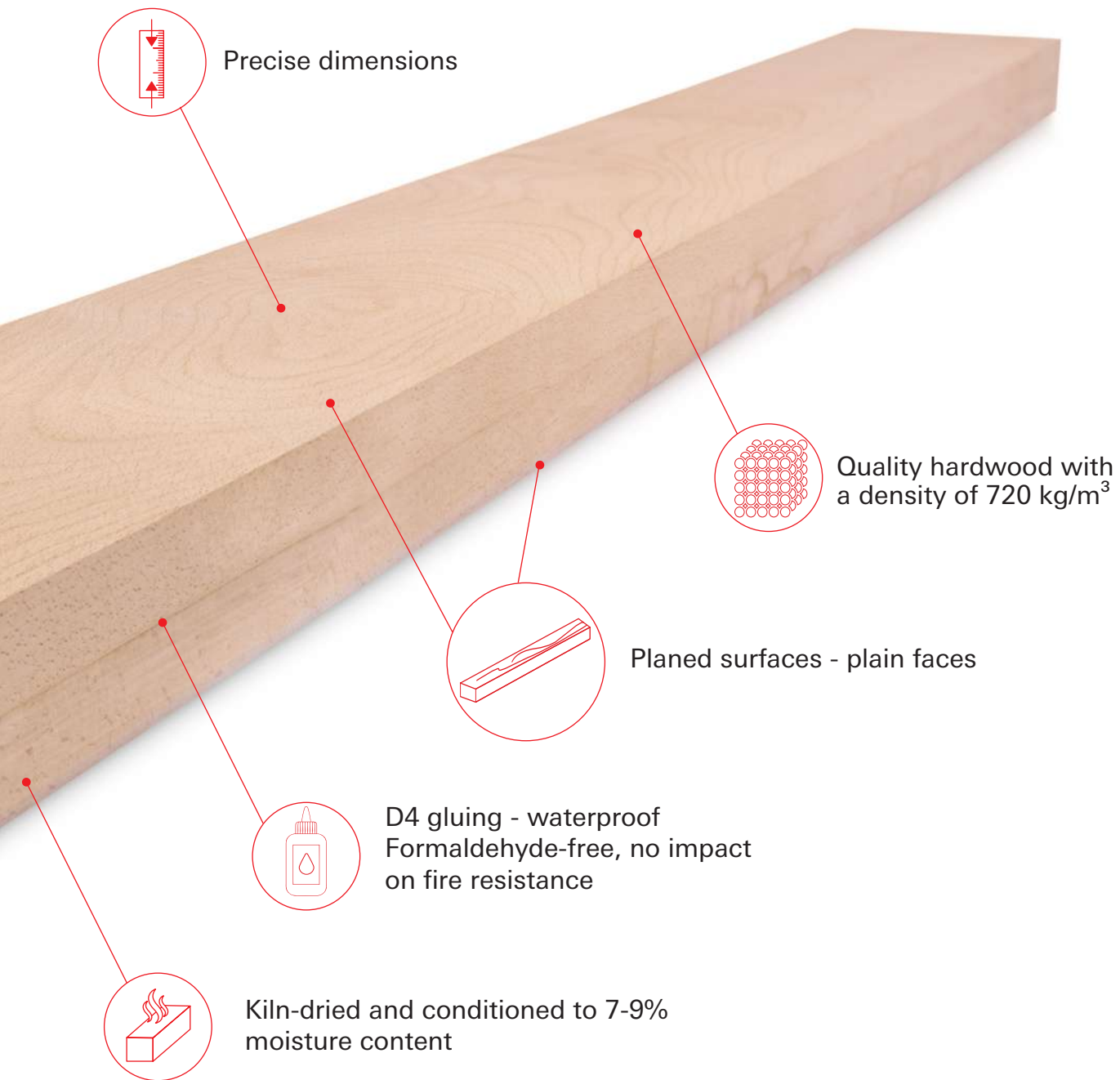
Lightly steamed to attain even and consistent colour

Tangentially cut with an attractive year ring structure

Face and edges free of defects

Overview - Dimensions

Sortings	Thickness [mm]	Widths [mm]	Lengths* [mm]
AAX* CCX*	52 (planed to 44)	80, 100, 125, 150	900, 1000, 2200, 2300, 2400
Tolerances	± 0.5 mm	- 0 / +1 mm	± 2 mm per m



* Other Lengths available on request

FRONT



BACK



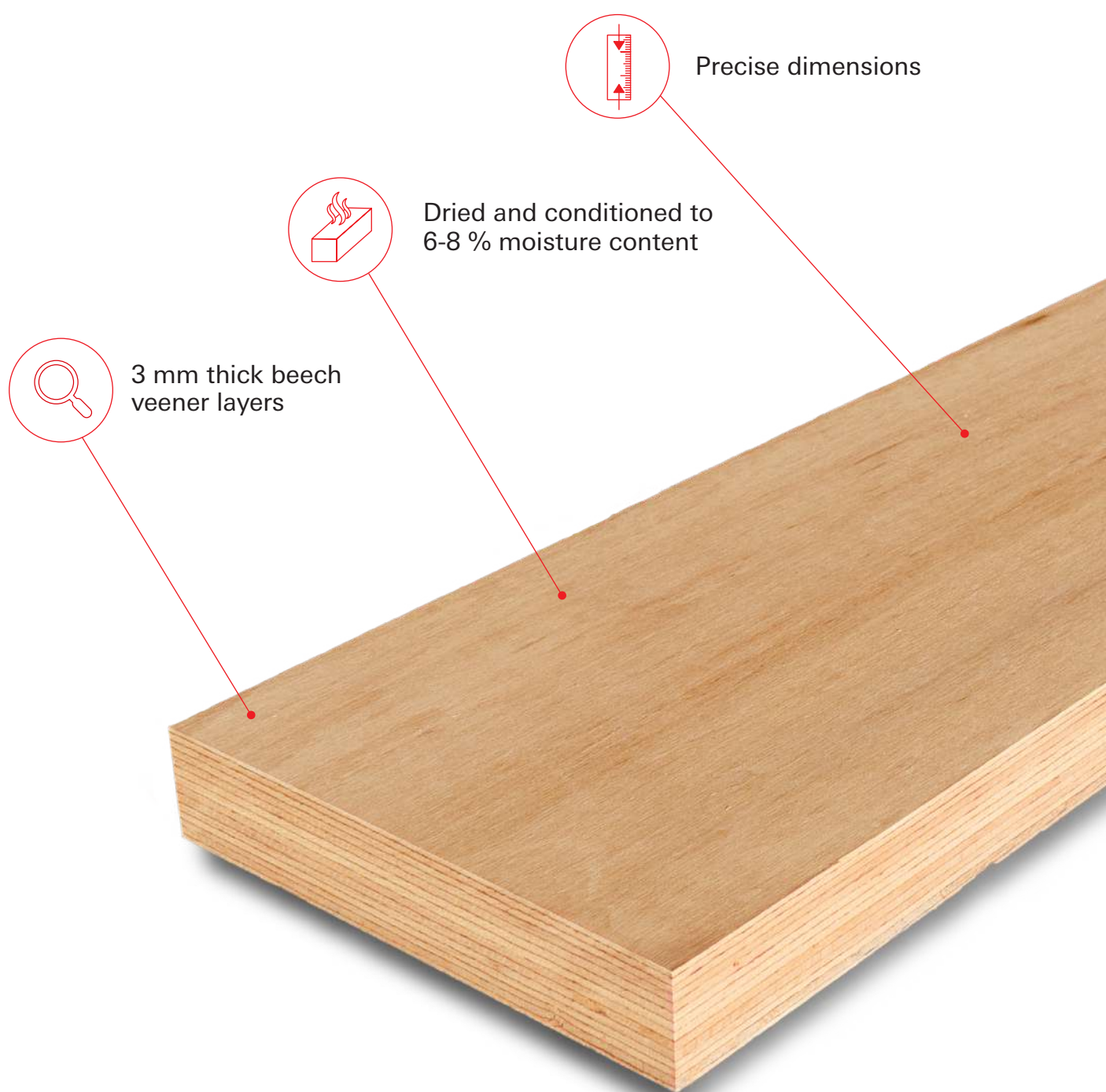
FRONT



BACK

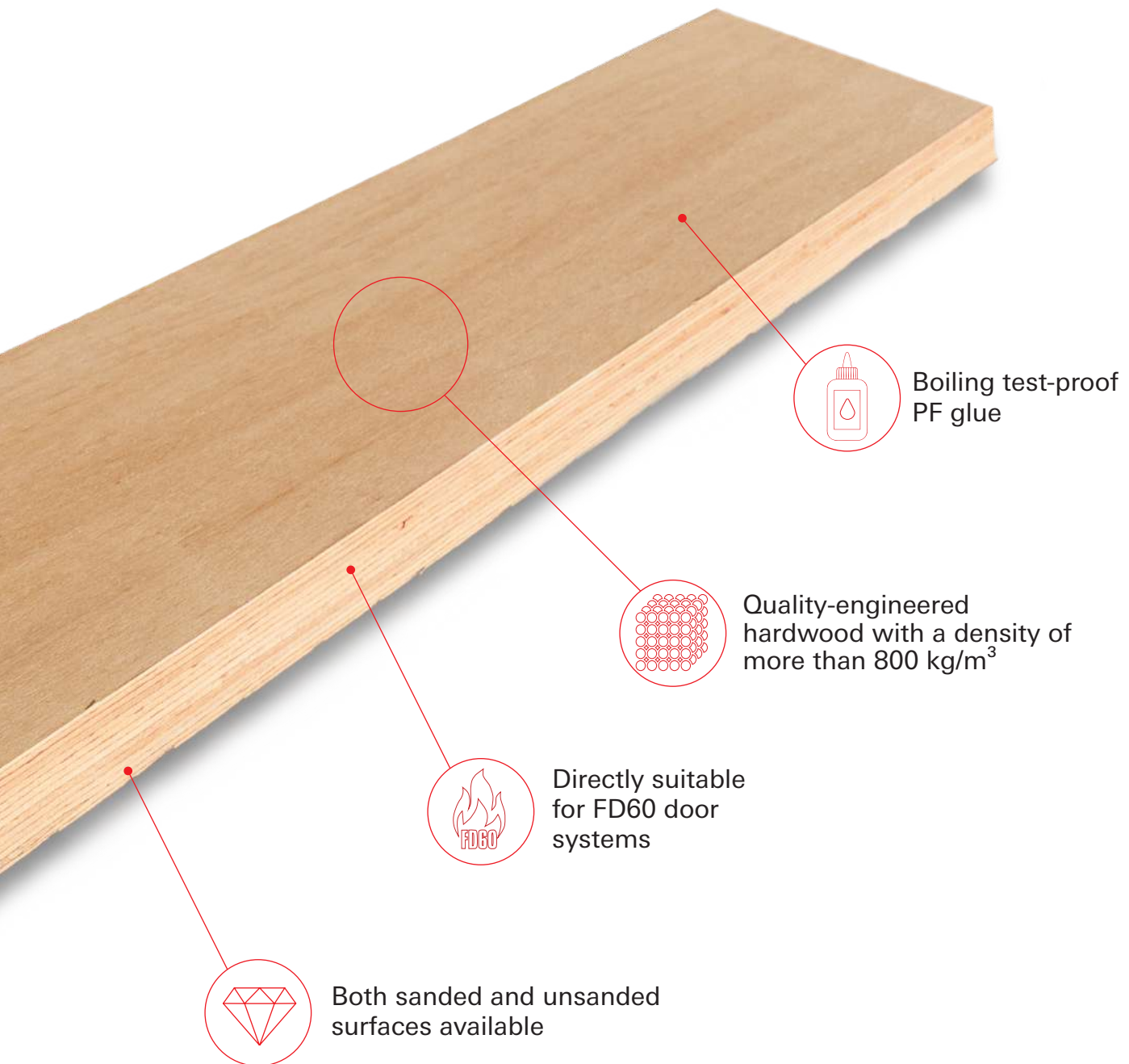


Engineered Laminated Beech (E-Lam) **Door Frames** is a high - quality, semi-finished door frame component, glued from 3 mm veneers out of European Beech (*Fagus sylvatica*).

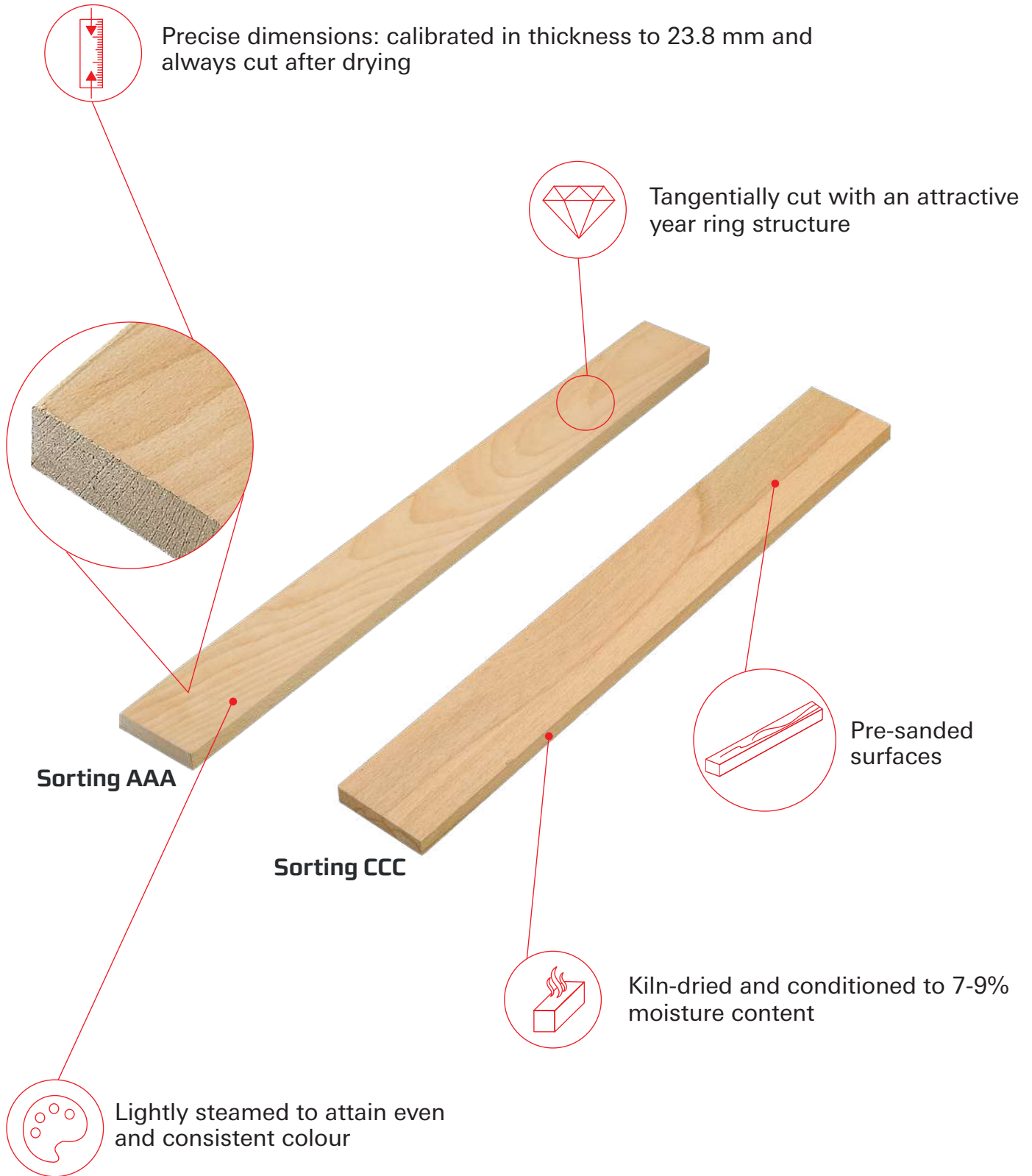


Overview - Dimensions

Thickness* [mm]	Widths* [mm]	Lengths* [mm]
42 (sanded 40)	100, 125, 150, 175, 200, 225,	2000, 2200, 2300, 2400,
45 (sanded 44)	250, 275, 300, 600, 900	2500, 2700, 3000
21 - 63 mm in 3 mm steps	100 - 1820	≥ 2000 individual length
Tolerances		
unsanded ± 1 mm, sanded ± 0.5 mm	± 1 mm	± 2 mm



* Other Thicknesses | Widths | Lengths available on request



COMPONENTS // Solid Beech standard dimensions on stock
Thickness: 23.8 mm (invoiced: 26 mm)

width length	42 mm		45 mm		54 mm		68 mm		80 mm		100 mm		125 mm	
	Pcs.	Vol [m³]	Pcs.	Vol [m³]	Pcs.	Vol [m³]	Pcs.	Vol [m³]	Pcs.	Vol [m³]	Pcs.	Vol [m³]	Pcs.	Vol [m³]
3,000 mm		3.3		3.4		3.4		3.4		3.5		3.4		3.1*
2,750 mm		3.0		3.1		3.1		3.1		3.2		3.2		2.9
2,400 mm		2.6		2.7		2.7		2.7		2.8		2.8		2.5
2,250 mm	1,000	2.5	960	2.5	800	2.5	2.6	640	560	2.6	440	2.6	320	2.3
2,200 mm		2.4		2.5		2.5		2.5		2.5		2.5		2.3
2,100 mm		2.3		2.4		2.4		2.4		2.4		2.4		2.2
2,000 mm		2.2		2.3		2.3		2.3		2.3		2.3		2.1
1,900 mm		2.2		2.2		2.1		2.2		2.2		2.2		2.0
1,800 mm		2.0		2.1		2.0		2.0		2.1		2.1		1.9
1,600 mm		1.8		1.9		1.8		1.8		1.9		1.8		1.7
1,500 mm		1.7	960	1.8	800	1.7	1.7	640	560	1.8	440	1.7	320	1.6
1,400 mm	1,040	1.6		1.6		1.6		1.6		1.6		1.6		1.5
1,300 mm		1.5		1.5		1.5		1.5		1.5		1.5		1.4
1,200 mm		1.4		1.4		1.4		1.4		1.4		1.4		1.3
1,000 mm		1.1	1,000	1.2		1.1		1.1		1.2		1.1		1.0
900 mm		1.0		1.0		1.0		1.0		1.0		1.0		0.9
800 mm		0.9		0.9		0.9		0.9		0.9		0.9		0.8
750 mm		0.9	1,000	0.9	800	0.8	0.9	640	560	0.9	440	0.9	320	0.8
700 mm	1,040	0.8		0.8		0.8		0.8		0.8		0.8		0.7
650 mm		0.7		0.8		0.7		0.7		0.8		0.7		0.7
600 mm		0.7		0.7		0.7		0.7		0.7		0.7		0.6
550 mm		1.2		0.6		1.2		1.2		1.3		1.3		1.1
500 mm		1.1	1,000	0.6		1.1		1.1		1.2		1.1		1.0
450 mm	2,080	1.0		0.5	1,600	1.0	1.0	1,280	1,120	1.0	880	1.0	640	0.9
400 mm		0.9		0.9		0.9		0.9		0.9		0.9		0.8
350 mm		0.8	2,000	0.8		0.8		0.8		0.8		0.8		0.7
300 mm	3,120	1.0		1.1		1.0		1.0		1.0		1.0		0.9
250 mm		0.9	3,000	0.9	2,400	0.8	0.9	1,920	1,080	0.9	1,320	0.9	960	0.8
200 mm	4,160	0.9	4,000	0.9	3,200	0.9	0.9	2,560	2,240	0.9	1,760	0.9	1,280	0.8
150 mm	5,200	0.8	5,000	0.9	4,000	0.8	0.8	3,200	2,800	0.9	2,200	0.9	2,200	0.7

COMPONENTS SORTED LENGTHS

2,701 - 3,000 mm	3.1	3.2	3.2	3.3
2,401 - 2,700 mm	2.8	2.9	2.9	3.0
2,101 - 2,400 mm	2.6	2.5	2.5	2.6
1,801 - 2,100 mm	2.1	2.2	2.2	2.3
1,501 - 1,800 mm	1.8	1.9	1.9	1.9

Solid Beech:

Tolerances:

Lightly steamed | Homogeneously dried to 7-9% KD | Calibrated thickness | Cut-to-size after kiln drying

Thickness: approx. ±0.3 mm calibration tolerance | Width: approx. ±0.5 mm |

Length: approx. ±1 mm per linear metre

Tolerances refer to a moisture content of 7-9% (solid beech lumber). The swelling and shrinking behaviour of higher equilibrium moisture contents must be taken into account.

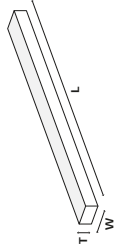
Thickness: 23.8 mm (Invoiced thickness: 26 mm)

Customised lengths are available upon request for orders of 18m³ volume or more per dimension.



Scan the QR-code to check available dimensions in stock.

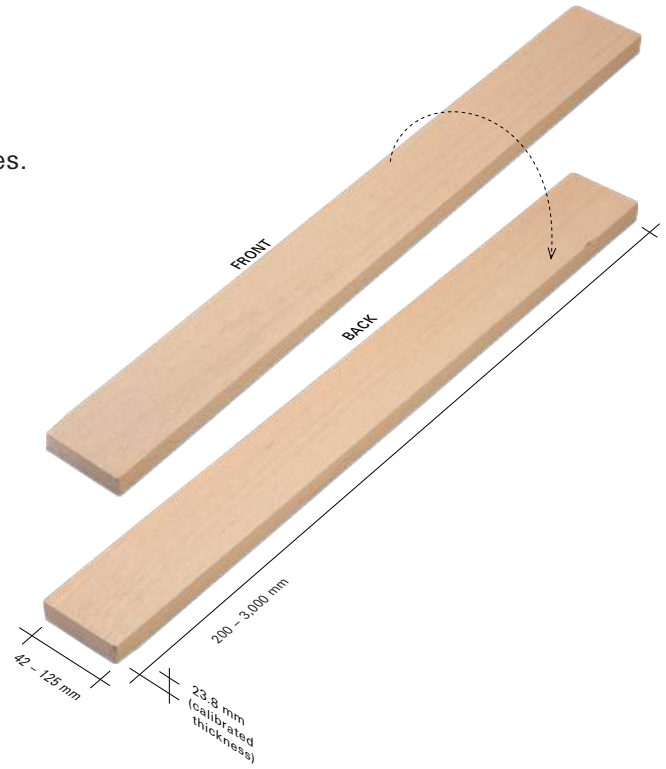
* Available in grading CCC.



COMPONENTS // Solid Beech

AAA | 4 sides clear

- Min. 90% of the COMPONENTS are clean, pin knots not determined as a defect.
- Max. 10% of the lamellas can have natural attributes.



FRONT

BACK



Photos of samples for the visualisation of sorting requirements. Print and photo-related colour deviations (from the original) possible.

COMPONENTS // Solid Beech

CCC | 4 sides clear - colour no defect

- Min. 90% of the COMPONENTS are clean, colour and pin knots not determined as a defect.
- Colour variations permissible on all sides, i.e. red heart, blue stain, mineral.
- Max. 10% of the lamellas can have additional natural attributes.



FRONT



BACK



Photos of samples for the visualisation of sorting requirements. Print and photo-related colour deviations (from the original) possible.

Cut-To-Size Laminated Veneer Lumber
Spruce

FRONT



BACK



_Spruce veneers can contain natural wood features such as knotholes, cracks or colour variations

_Veneer glue joints visible on board surfaces

_Application for e.g. reinforcement bars for the door industry

_Tolerances refer to a moisture content of 7-9% ex works

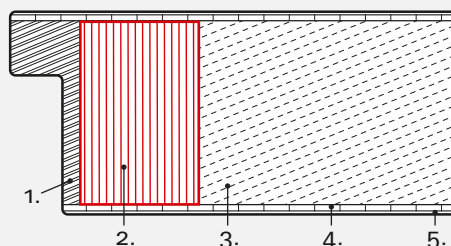
_The swelling and shrinking behaviour of higher equilibrium moisture contents must be taken into account

_Largely dimensionally stable

Material	Thickness [mm]	Widths [mm]	Lengths [mm]
Cut-to-size Spruce LVL	21 - 81 *	from 15	700 - 6000
Tolerances	± 0.3 mm (planed) +0.3 / -1 mm (equalised)	± 0.3 mm (if required ± 0.1 mm)	± 1 mm

More dimensions available on request

* Unsanded, subsequent sanding possible

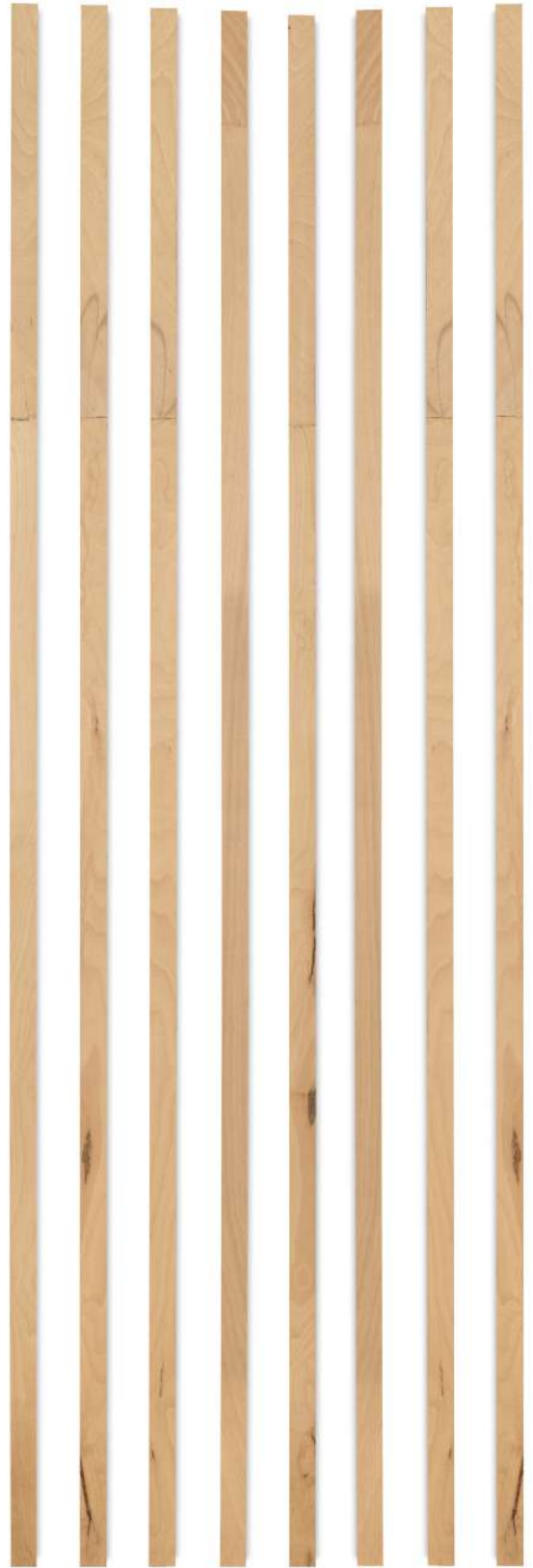


1. Lipping
2. Stile
3. Insert
4. Cover plate
5. Top layer

FRONT



BACK



_Beech veneers can contain natural wood features such as knotholes, cracks or colour variations

_Veneer glue joints visible on board surfaces

_Application for e.g. reinforcement bars for the door industry

_Tolerances refer to a moisture content of 6-8% ex works

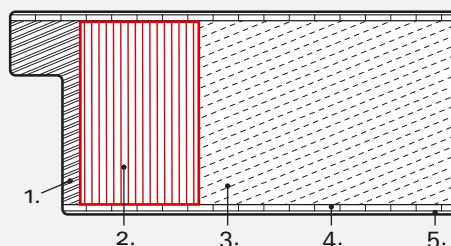
_The swelling and shrinking behaviour of higher equilibrium moisture contents must be taken into account

_Largely dimensionally stable.

Material	Thickness [mm]	Widths [mm]	Lengths [mm]
Cut-to-size LVL Beech	21 - 66 *	from 15	700 - 6,000
Tolerances	± 0.3 mm (planed) +0.3 / -1 mm (equalised)	± 0.3 mm (if required ± 0.1 mm)	± 1 mm

More dimensions available on request

* Unsanded, subsequent sanding possible



1. Lipping
2. Stile
3. Insert
4. Cover plate
5. Top layer

Pollmeier DOOR COMPONENTS

Beech. One Wood. So many possibilities.



The production site in Aschaffenburg is Europe's largest solid wood cutting plant.

Please contact us.
We are happy to support you!

sales@pollmeier.com
+49 36926 945 163

Our products are certified according to PEFC.

